

**RDX Antibody (C-term)**  
**Affinity Purified Rabbit Polyclonal Antibody (Pab)**  
**Catalog # AP14028B****Specification**

---

**RDX Antibody (C-term) - Product Information**

Application	WB,E
Primary Accession	<a href="#">P35241</a>
Other Accession	<a href="#">P26044</a> , <a href="#">Q9PU45</a> , <a href="#">Q32LP2</a> , <a href="#">NP_002897.1</a>
Reactivity	Human
Predicted	Bovine, Chicken, Pig
Host	Rabbit
Clonality	Polyclonal
Isotype	Rabbit IgG
Calculated MW	68564
Antigen Region	466-495

**RDX Antibody (C-term) - Additional Information****Gene ID** 5962**Other Names**

Radixin, RDX

**Target/Specificity**

This RDX antibody is generated from rabbits immunized with a KLH conjugated synthetic peptide between 466-495 amino acids from the C-terminal region of human RDX.

**Dilution**

WB~~1:1000

E~~Use at an assay dependent concentration.

**Format**

Purified polyclonal antibody supplied in PBS with 0.09% (W/V) sodium azide. This antibody is purified through a protein A column, followed by peptide affinity purification.

**Storage**

Maintain refrigerated at 2-8°C for up to 2 weeks. For long term storage store at -20°C in small aliquots to prevent freeze-thaw cycles.

**Precautions**

RDX Antibody (C-term) is for research use only and not for use in diagnostic or therapeutic procedures.

**RDX Antibody (C-term) - Protein Information****Name** RDX

**Function** Probably plays a crucial role in the binding of the barbed end of actin filaments to the plasma membrane.

#### Cellular Location

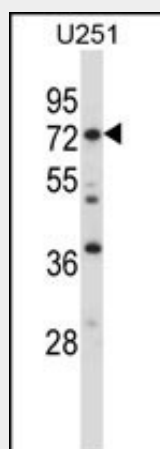
Cell membrane; Peripheral membrane protein; Cytoplasmic side. Cytoplasm, cytoskeleton. Cleavage furrow. Cell projection, microvillus {ECO:0000250|UniProtKB:P26043}. Cell projection, stereocilium {ECO:0000250|UniProtKB:P26043}. Note=Enriched at the stereocilium base with very low levels in the shaft of stereociliary bundles (By similarity). Highly concentrated in the undercoat of the cell-to-cell adherens junction and the cleavage furrow in the interphase and mitotic phase, respectively {ECO:0000250|UniProtKB:P26043}

#### RDX Antibody (C-term) - Protocols

Provided below are standard protocols that you may find useful for product applications.

- [Western Blot](#)
- [Blocking Peptides](#)
- [Dot Blot](#)
- [Immunohistochemistry](#)
- [Immunofluorescence](#)
- [Immunoprecipitation](#)
- [Flow Cytometry](#)
- [Cell Culture](#)

#### RDX Antibody (C-term) - Images



RDX Antibody (C-term) (Cat. #AP14028b) western blot analysis in U251 cell line lysates (35ug/lane). This demonstrates the RDX antibody detected the RDX protein (arrow).

#### RDX Antibody (C-term) - Background

Radixin is a cytoskeletal protein that may be important in linking actin to the plasma membrane. It is highly similar in sequence to both ezrin and moesin. The radixin gene has been localized by fluorescence in situ hybridization to 11q23. A truncated version representing a pseudogene (RDXP2) was assigned to Xp21.3. Another pseudogene that seemed to lack introns (RDXP1) was mapped to 11p by Southern and PCR analyses.

#### RDX Antibody (C-term) - References

Gloerich, M., et al. Mol. Cell. Biol. 30(22):5421-5431(2010)  
Kramer, B., et al. Eur. J. Immunol. 39(12):3447-3458(2009)  
Parisiadou, L., et al. J. Neurosci. 29(44):13971-13980(2009)  
Belkina, N.V., et al. Proc. Natl. Acad. Sci. U.S.A. 106(12):4707-4712(2009)  
Wolf, C., et al. BMC Med. Genet. 10, 91 (2009) :